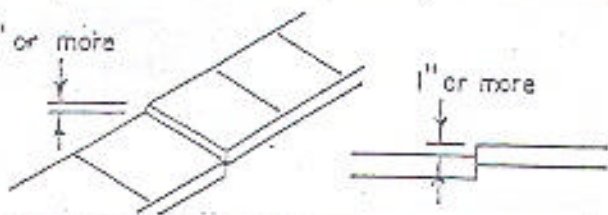


1" or more



REPAIR CODE "A"

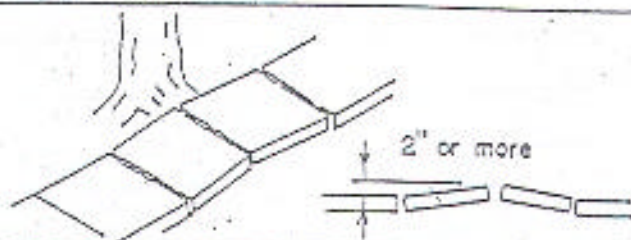
The sidewalk is cracked with a vertical edge existing of more than one inch high.

1" or more

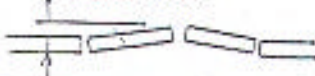


REPAIR CODE "B"

The sidewalk has raised more than two inches in a eight to ten (8'-10') foot area from the normal line of grade of the sidewalk.

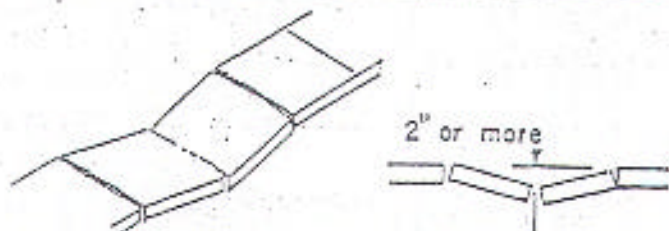


2" or more



REPAIR CODE "C"

The sidewalk is depressed more than two inches in a eight to ten (8'-10') foot area from the normal line of grade of the sidewalk.

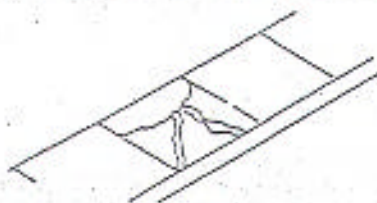


2" or more



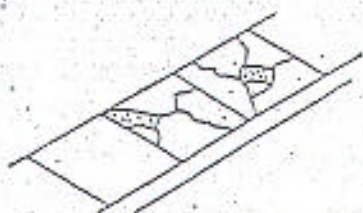
REPAIR CODE "D"

The sidewalk has cracked into more than three pieces per 4' x 4' square and sections are distorted or distressed with a vertical height difference of one-half inch or more or a horizontal separation of two inches or more.



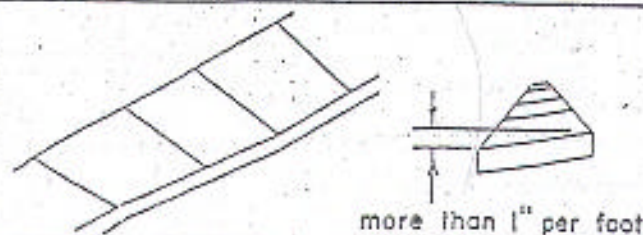
REPAIR CODE "E"

The sidewalk has cracked and part of the sidewalk is missing, forming holes.



REPAIR CODE "F"

The sidewalk has settled or for some other reason is sloped and tilted more than one inch per foot (toward either side).



more than 1" per foot

REPAIR CODE "G"

The sidewalk has spalled and the surface is gone.

